

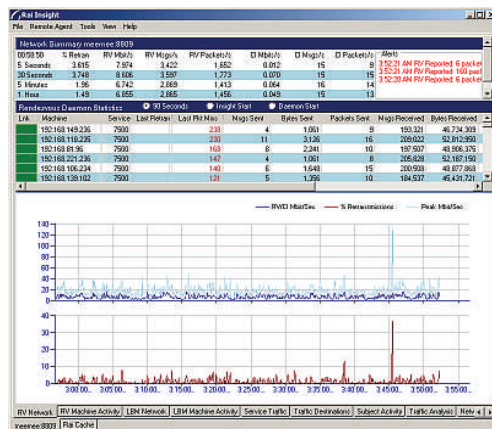


## Rai Insight™ : Market Data Network Monitoring and Real-Time Analysis

A complete understanding of data flows and network events such as retransmissions is critical to ensuring that a market data network continuously meets quality of service requirements. And when something does go wrong, understanding the cause of the event is the first step in recovery and prevention of reoccurrence.

**Rai Insight** is the only application to completely address the unique monitoring requirements of TIBCO Rendezvous, 29West LBM and ciServer-based market data networks. Rai Insight combines passive traffic monitoring with protocol awareness to provide comprehensive real-time monitoring, alerting and historical analysis for market data networks based on any of these transports.

While other monitoring applications typically rely on Rendezvous status messages to capture events every 90 seconds, Rai Insight monitors traffic directly to detect problems as they're occurring, providing information about retransmissions and broadcast storms in real-time. With Rai Insight you're aware of what's happening on the network as it's happening - allowing quick problem resolution.



### Unparalleled Visibility

Rai Insight's comprehensive traffic and network monitoring capabilities include:

- Automatic discovery and monitoring of all Rendezvous, ciServer and 29West LBM multicast traffic
- Extremely low footprint network monitoring, full multicast support
- Immediate notification of retransmission and packet missed events.
- Continuous real-time monitoring capability with historic data
- Daemon, subject, subscription and burst traffic statistics
- Subscription activity reporting
- Highly configurable alerting on all monitored data with the Insight Alert Agent
- Latency monitoring across network through applications including Rai Cache™, TIC and RTIC
- Rai Cache statistics monitoring
- Subscription Start/Stop monitoring
- Incident analysis support
- pcap file replay capability
- Port mirroring and Endace card

### About Rai

Rai Technology was founded by former senior staff from Teknekon, TIBCO, TIBCO Finance, and Reuters. For the last five years we've been applying decades of hands-on experience to providing highly scalable, low-latency market data integration solutions for our financial services clients around the world.

Behind all of Rai Technology's product decisions is the goal of providing our customers with the fastest and most scalable integration solutions on the market, while helping them preserve their investment in existing infrastructure. Our satisfied customers worldwide have learned what true integration really means. For more information about what Rai Technology can do for you, contact us today at [info@raitechnology.com](mailto:info@raitechnology.com)